



معاً لمكافحة الفقر  
REDUCING POVERTY  
**ISFD**

**IsDB**   
البنك الإسلامي للتنمية  
Islamic Development Bank



# IsDB-ISFD SCHOLARSHIP PROGRAM FOR IsDB LEAST DEVELOPED MEMBER COUNTRIES (LDMCs)

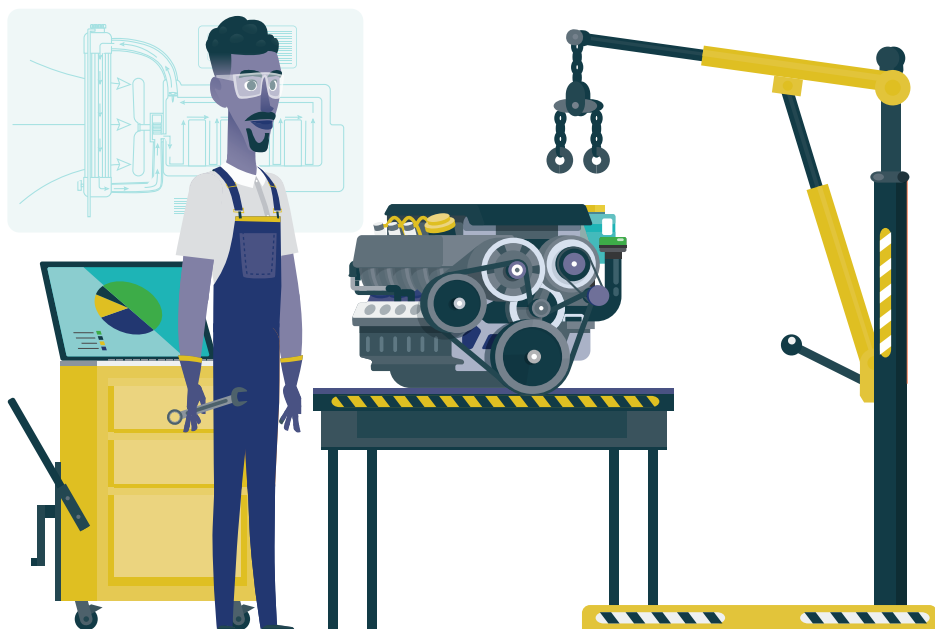


## BACKGROUND

The IsDB-ISFD Scholarship Program for Bachelor and Technical Diploma for Least Developed Member Countries (LDMCs) was launched in 2019 with the support of Islamic Solidarity Fund for Development (ISFD).

## OBJECTIVE

The objective of the Program is to provide educational opportunities to financially impoverished but academically successful young men and women from LDMCs to pursue a bachelor's degree and/or technical diploma (TVET) in scientific and social disciplines. The aim is to improve their socioeconomic conditions and enable them to make a meaningful contribution to the development of their countries.



## CONCEPT OF THE PROGRAM

The Program is more than just a straight financial assistance to eligible needy qualified students. It is also a tool for improvement of socioeconomic conditions of LDMCs through the graduates it produces. It is basically a human development program, since the scholarship is an interest-free loan (Qard-Hasan) to the students and a grant to the LDMCs to which they belong (since repayment is not made to IsDB but to a local trust).

Under the program, the students are required to repay the loan after graduation and employment, in easy instalments, to the IsDB Education Trust (IET), a Waqf set up (or

to be set up) in the students' countries. The students are also required to play an active role in community development.

The repaid fund is recycled to provide more scholarships to other eligible students from the same country to complement the direct IsDB-ISFD scholarships and to sustain the Program in the long run. On the other hand, the community development services rendered by the IsDB-ISFD graduates will contribute to the socioeconomic development of the country.

The Program is also a joint effort between IsDB and the Offices of IsDB Governors, who are required to engage national NGOs



to serve as the Counterpart Organization (CPOs) for the Program implementation.

IsDB and its partners have a vision to develop the human potential of the LDMCs that is why IsDB has been consistently making commitments to these countries ever since the

inception of the Program in 2019. In brief, IsDB wishes to develop the mind as well as the character of the IsDB students and the country itself, which is the ultimate target of the IsDB-ISFD investment.

IsDB also expects its students to play a leading role in guiding and assisting the development of their countries, both morally and materially. Therefore, IsDB expects them to be good citizens and competent professionals at the same time.

In summary, all these features are linked together in an integrated whole to constitute the basic concepts that characterize

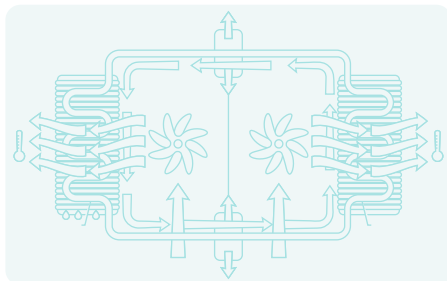
the Program as a distinct Country Development Program (loan to individual students, grant to the country, repaid loan as the funding base for Waqf (IET) to complement as in-country Scholarship Program, local implementation by local NGOs as Counterpart Organizations and the emphasis on in-country study and post-study community development services.

As a growing number of IsDB-ISFD-sponsored students are graduating, the need to support the postgraduation community activities (i.e., loan repayment collection and management, local scholarship program, community services, formation of IsDB Graduate Associations (IGAs) are becoming more vital. Indeed, the ultimate IsDB objective of socioeconomic development depends on this aspect. Thus, the roles of IETS and IGAs are becoming more crucial, as the Program takes local roots and expands with refunds.

## FIELDS OF STUDY

The Program for bachelor's degrees focuses on medicine, engineering, agriculture and other related fields such as dentistry, pharmacy, veterinary science, nursing, nutrition study, computer science, forestry and fishery. Candidates interested in studying technical diploma courses may apply only for the following fields of study:

1. Mechanical Manufacturing Methods
2. Mechatronics
3. Air Conditioning
4. Arts and Crafts
5. Automation and Industrial Instrumentation
6. Automotive Maintenance and Repair
7. Biomedical Equipment Maintenance
8. Buildings and Public Works
9. Business and IT
10. Business Management
11. Civil Engineering Technician
12. Clothing Industries Production
13. Design and Innovation in the Apparel Industry
14. Design and Manufacture of Moulds and Tools
15. Design Techniques for the Electronic Industry
16. Development of Smart and Informative Industrial Systems
17. Diagnostics and Embedded Electronics
18. Digital Infrastructure Development
19. Early Childhood Educator
20. Electricity and Electronics
21. Electromechanics of Automated Systems
22. Food Industry
23. Furniture Study and Design
24. General Mechanics
25. Hygiene and Quality
26. Industrial Maintenance
27. Infrastructure and Networks
28. International Trade
29. Leather and Footwear
30. Logistics Operations
31. Maintenance of Equipment for the Plastics Industry
32. Marketing and Multimedia
33. Mechanism and Industrial Media
34. Mechatronics Maintenance
35. Media and Communication
36. Metal Construction
37. Miscellaneous Services and Industries
38. Office Design
39. Plastic Industry
40. Production Technologies for the Electronic Industry
41. Quality Control in the Food Industry
42. Quality in the Garment Industry
43. Topographical Survey
44. Technician in Commerce
45. Textiles and Clothing
46. Tourism and Hospitality
47. Transport Operations
48. Vehicle transport and Maintenance.





## PLACE OF STUDY

Consistent with the concept of the Program, scholarships are provided for studies at recognized government universities/technical institutes in the students' own countries. However, for students who are unable to secure admission in their own countries, IsDB may facilitate their placement at universities in member countries that have concluded agreements with IsDB (Malaysia, Morocco, and Türkiye).

Other institutions of study in IsDB member countries may also be considered if their academic credibility and reputation can be substantiated as being high in the fields of study proposed by the candidates.

## ELIGIBILITY REQUIREMENTS

The Program is intended to be for academically meritorious but financially needy students from LDMCs with a strong desire to engage in social services and community development of the country.

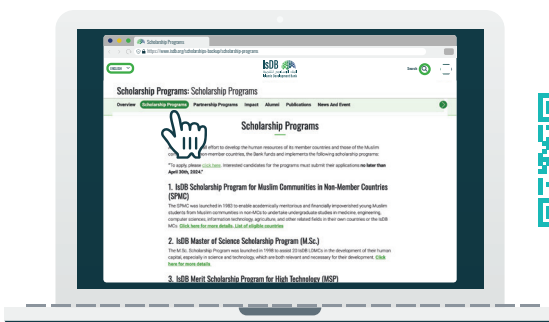
**The prospective candidates must also meet the following eligibility criteria:**

- Maximum age of 24 years at the closing date of applications.
- In need of financial assistance without which study may have to stop.
- Not an IsDB staff member or Executive Director, his/her alternate, and/or staff of any type of appointment (including temporary and consultant) of the IsDB Group nor a close relative of the aforementioned by blood or adoption, with the term "close relative" being defined as mother, father, sister, half-sister, brother, half-brother, son, daughter, aunt, uncle, niece or nephew.

- Completed senior secondary education (or the equivalent of approximately 12 years of education) with good grades in major science subjects.
- Must choose a field of study listed among the approved disciplines of the Program.
- Provided evidence of language proficiency in the university medium of instruction as relevant. The language proficiency must be supported by a document or certificate, e.g., for English, by a recognized language certificate such as TOEFL, IELTS or by having passed the required level test conducted such as by British Council or equivalent system in French or other languages.
- Provided certified English or French translation of all documents in case they are initially in other languages. Be medically fit and willing to undergo medical examination after selection.
- Having prior admission in one of the disciplines covered under the Program at a recognized college or university in their own country is desirable.
- Not living in a country other than his/her home country.
- Endorsed by the local NGO partner through the IsDB selection procedures.
- Committed to returning to his/her home country on completion of the study under the Program to contribute to its development (if studied abroad). Not a beneficiary of any other scholarship at the time of application and during studies.

## NOTES:

- The IsDB-ISFD scholarship may only supplement, and shall not duplicate, any other source of financial support the applicant might have. If the applicant is awarded a scholarship, he/she must inform IsDB at that time if he/she has other sources of scholarship funding.
- Submitting the application or getting admission by the academic institution does not mean that the applicant has been accepted for a scholarship. Accordingly, the applicant should not take any action concerning his/her current engagement or otherwise until notified by IsDB of having been awarded a scholarship.



<https://www.isdb.org/scholarships-backup/scholarship-programs>



## BENEFITS AND FACILITIES

The Program covers the following benefits:

- Tuition fees, payable to the universities directly.
- Monthly stipend commensurate with the cost of living in the country of study.
- Books/clothing allowance, the equivalent of three months monthly stipends, once a year.
- Cost of medical treatment (either at the university or local state hospital).
- For students who are selected to study abroad, IsDB also provides return economy class tickets to and from the countries of study (once at the beginning and at the end of study) as well as an installation allowance.

The scholarship does not cover the following:

- Visa application(s) costs.
- Expenses to bring and/or support a scholar's family members.
- Extracurricular courses or training.
- Courses that do not meet the minimum credits required to earn the graduate degree.
- Language training not provided by the study program.
- Additional travel during your study program.
- Expenses related to research, supplementary educational materials, field trips, participation in workshops/seminars, exchange programs conferences or internships.
- Educational equipment, such as computers.
- Residence permit fee.



## OBLIGATIONS OF THE BENEFICIARIES

### Beneficiaries awarded the scholarship shall:

- Sign a surety Bond stating their commitment to their studies, to return to their countries upon completion of their studies and to participate in the development of their countries, through their respective professions.
  - Devote themselves to their studies on a full-time basis without interruption and provide IsDB with reports on their academic studies and activities on a regular basis.
  - Repay the loan after graduation and gainful employment, in easy instalments, to a local IET to be established by IsDB in their countries.
- Not to seek or accept any other scholarship or remunerated work during their studies under the Program may interfere with their studies or make the fulfillment of their other obligations difficult unless otherwise approved in writing by IsDB.
  - Respect the laws of the country of study and maintain good personal and professional conduct consistent with the rules, regulations and objectives of the Program and the overall mission of IsDB as an Islamic institution.





## COUNTERPART ORGANIZATIONS (CPOs)

The Program is a joint effort between IsDB and the LDMCs. As such, they must select a national NGO to serve as the Counterpart Organization (CPO) for the Program implementation. The CPO in each country is requested to support the implementation of the Program in terms of announcing the call for applications, verifying applicants' information and documents and supporting the preselection process (which includes interviewing applicants to assess their commitment and financial need and validate their school certificates/transcripts, university admission and other relevant documents).

The CPO is also required to set up a local IET with guidance from IsDB and the Office of the IsDB Governor to facilitate the loan refund and to launch and manage the post-study Program to support community services and development.

## ISDB EDUCATION TRUSTS

To ensure the continuity of the Program in the long run, the IsDB (in cooperation with Offices of IsDB Governors and the CPOs) will establish an IsDB Education Trust (IET) in each LDMC to deal with scholarship loan refunds and develop local Program using collected/repaid loans.

The trustees of the IET are drawn from reputable organizations and personalities and its core members consist of some of the active members of the CPOs. As such, it is expected that the IET will function in the country as the final CPO for the implementation of the Program in the long run. This is consistent with the concept of the Program as a development program for the country.

- Eligible LDMCs
- Rest of World



## LIST OF ELIGIBLE LDMCs

- |                 |                   |                  |            |
|-----------------|-------------------|------------------|------------|
| 1. Afghanistan  | 7. Djibouti       | 13. Mozambique   | 19. Togo   |
| 2. Bangladesh   | 8. Gambia         | 14. Niger        | 20. Uganda |
| 3. Benin        | 9. Guinea         | 15. Senegal      | 21. Yemen  |
| 4. Burkina Faso | 10. Guinea Bissau | 16. Sierra Leone |            |
| 5. Chad         | 11. Mali          | 17. Somalia      |            |
| 6. Comoros      | 12. Mauritania    | 18. Sudan        |            |



Islamic Development Bank  
8111 King Khaled St  
Al Nuzlah Yamania  
Unit 1 Jeddah 22332-2444  
Kingdom of Saudi Arabia

✉ [scholar@isdb.org](mailto:scholar@isdb.org)

🌐 [www.isdb.org/scholarships](http://www.isdb.org/scholarships)

🌐 <https://isdbscholarships.smartsimple.com>