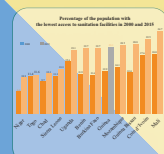




Islamic Development Bank

# Facts and Figures on IDB Member Countries

## 2018



Economic Research and Institutional Learning Department

Rajab 1439H (March 2018)

IDB Member Country/Region	POPULATION			SOCIAL INDICATORS					LABOUR FORCE		INFORMATION & COMMUNICATION TECHNOLOGY		IDBG STATISTICS			IDB Member Country/Region
	Total Population (million)	Population Density (person/square km)	Annual Growth Rate (%)	Crude Birth Rate (per 1,000 persons)	Crude Death Rate (per 1,000 persons)	Infant Mortality Rate (per 1,000 live births)	Life Expectancy at birth (year)	Adult literacy Rate (%)	Total Labour Force (million)	Average Annual Growth Rate (%)	Total Telephone Subscribers (% Population)	Estimated Internet Users (% Population)	Cumulative Net Approvals <sup>1</sup>		Subscribed Capital (as of end 2017)	
	2017	2017	2017	2015	2015	2016	2015	Latest Available	2017	2017	2016	2016	# Projects	US\$ million	%	
<b>Sub-Saharan Africa-22</b>	<b>508.4</b>	<b>44</b>	<b>2.7</b>	<b>39</b>	<b>11</b>	<b>59</b>	<b>56.7</b>	<b>48.6</b>	<b>173.5</b>	<b>3.1</b>	<b>79.1</b>	<b>20.7</b>	<b>2,130</b>	<b>21,673.5</b>	<b>9.838</b>	<b>Sub-Saharan Africa-22</b>
Benin	11.2	99	2.8	37	9	63	60.6	32.9	4.5	3.3	80.8	12.0	86	736.3	0.041	Benin
Burkina Faso	19.2	70	2.9	39	9	53	59.8	34.6	7.0	3.1	84.0	14.0	159	2,054.1	0.178	Burkina Faso
Cameroon	24.1	51	2.6	37	10	53	57.6	71.3	10.5	3.0	72.5	25.0	95	1627.0	0.254	Cameroon
Chad	14.9	12	3.0	44	13	75	52.6	22.3	5.6	3.5	44.6	5.0	107	761.3	0.019	Chad
Comoros	0.8	437	2.3	33	7	55	63.5	49.2	0.2	2.9	59.3	7.9	33	153.3	0.026	Comoros
Côte d'Ivoire	24.3	76	2.5	37	12	66	53.1	43.9	8.0	2.7	127.3	26.5	66	1,557.7	0.026	Côte d'Ivoire
Djibouti	1.0	41	1.5	23	8	53	62.2	..	0.4	2.3	40.5	13.1	88	917.4	0.010	Djibouti
Gabon	2.0	8	2.3	30	8	34	65.7	82.3	0.7	2.7	145.2	48.1	22	496.8	0.108	Gabon
Gambia	2.1	208	3.0	40	8	42	61.0	42.0	0.7	3.5	141.5	18.5	123	777.4	0.051	Gambia
Guinea	12.7	52	2.6	36	10	58	59.4	32.0	4.7	2.9	85.3	9.8	129	955.9	0.091	Guinea
Guinea-Bissau	1.9	66	2.5	37	11	58	57.0	45.6	0.8	2.8	70.3	3.8	18	21.0	0.010	Guinea-Bissau
Mali	18.5	15	3.0	43	11	68	57.5	33.1	6.9	3.7	121.5	11.1	151	1,535.4	0.101	Mali
Mauritania	4.4	4	2.7	35	8	54	63.0	45.5	1.3	3.1	87.8	18.0	160	1444.2	0.071	Mauritania
Mozambique	29.7	38	2.9	39	10	53	57.6	50.6	12.9	3.2	66.6	17.5	43	435.3	0.051	Mozambique
Niger	21.5	17	3.8	48	10	51	59.7	15.5	8.4	3.9	49.4	4.3	153	803.6	0.178	Niger
Nigeria	190.9	210	2.6	39	13	67	53.0	51.1	59.0	2.8	81.9	25.7	76	1,099.6	7.655	Nigeria
Senegal	15.9	82	2.8	36	6	34	66.7	42.8	5.2	3.4	100.5	25.7	177	2890.9	0.292	Senegal
Sierra Leone	7.6	105	2.2	36	13	83	51.4	32.4	2.5	2.5	97.9	11.8	71	393.8	0.036	Sierra Leone
Somalia	14.7	23	2.9	44	12	83	55.9	..	3.6	3.2	58.5	1.9	72	87.8	0.010	Somalia
Sudan	40.5	23	2.4	33	7	45	64.2	53.5	11.1	2.8	69.0	28.0	182	1,578.9	0.460	Sudan
Togo	7.8	143	2.5	34	9	51	59.9	63.7	3.5	2.8	75.4	11.3	50	626.4	0.036	Togo
Uganda	42.9	214	3.3	43	9	38	59.5	70.2	15.8	4.0	56.0	21.9	69	719.2	0.136	Uganda
<b>Middle East &amp; North Africa-18</b>	<b>434.4</b>	<b>39</b>	<b>1.7</b>	<b>23</b>	<b>5</b>	<b>19</b>	<b>73.2</b>	<b>77.6</b>	<b>145.5</b>	<b>1.8</b>	<b>126.3</b>	<b>47.2</b>	<b>2,479</b>	<b>48,629.6</b>	<b>74.753</b>	<b>Middle E &amp; N Africa-18</b>
Algeria	41.3	17	1.7	24	5	22	75.9	75.1	12.1	1.4	125.3	42.9	247	2,473.9	2.540	Algeria
Bahrain	1.5	1,964	4.6	15	2	6	76.9	94.6	0.9	5.9	237.7	98.0	90	1871.3	0.143	Bahrain
Egypt	97.6	98	1.9	27	6	19	71.3	75.1	31.1	2.2	120.8	39.2	256	11,638.3	7.072	Egypt
Iran	81.2	50	1.1	17	4	13	75.7	84.7	27.3	0.7	138.4	53.2	275	5875.9	8.248	Iran
Iraq	38.3	88	2.8	34	5	26	69.6	43.7	10.6	3.6	87.7	21.2	61	335.6	0.267	Iraq
Jordan	9.7	109	2.6	27	4	15	74.2	97.9	2.4	2.9	200.9	62.3	155	2551.9	0.434	Jordan
Kuwait	4.1	232	2.1	17	3	7	74.7	95.7	2.3	1.1	157.5	78.4	85	1,362.0	6.915	Kuwait
Lebanon	6.1	595	1.3	15	5	7	79.5	91.2	2.2	2.0	117.4	76.1	105	1707.8	0.071	Lebanon
Libya	6.4	4	1.3	20	5	11	71.8	..	2.4	1.7	141.3	20.3	35	640.9	9.428	Libya
Morocco	35.7	80	1.3	20	5	23	75.5	69.4	12.7	1.4	126.7	58.3	226	6799.1	0.507	Morocco
Oman	4.6	15	4.7	20	3	9	77.1	93.0	2.5	5.6	169.0	69.8	47	2,029.3	0.282	Oman
Palestine	4.9	817	2.7	32	3	17	73.3	96.9	1.3	3.8	86.1	61.2	63	80.4	0.039	Palestine
Qatar	2.6	227	2.7	10	1	7	78.5	97.7	2.0	2.4	166.4	94.3	20	452.0	7.177	Qatar
Saudi Arabia	32.9	15	2.0	20	3	11	74.6	94.4	13.8	3.0	169.6	73.8	289	4847.3	23.505	Saudi Arabia
Syria	18.3	99	-0.9	22	6	14	70.3	80.8	4.8	-0.6	69.4	31.9	73	765.9	0.037	Syria
Tunisia	11.5	74	1.1	19	6	12	75.5	79.0	4.1	0.7	134.4	50.9	240	3169.8	0.072	Tunisia
U.A.E.	9.4	112	1.4	10	2	7	77.5	90.0	6.4	0.5	227.4	90.6	62	1,013.2	7.507	U.A.E.
Yemen	28.3	53	2.4	32	6	43	64.7	..	6.4	2.9	71.8	24.6	150	1014.9	0.511	Yemen
<b>Asia &amp; Latin America-9</b>	<b>695.0</b>	<b>171</b>	<b>1.4</b>	<b>23</b>	<b>7</b>	<b>36</b>	<b>69.0</b>	<b>75.8</b>	<b>291.1</b>	<b>1.8</b>	<b>108.5</b>	<b>22.7</b>	<b>1,153</b>	<b>37,749.8</b>	<b>7.769</b>	<b>Asia &amp; Latin America-9</b>
Afghanistan	35.5	54	2.5	34	7	53	63.3	31.7	10.9	3.7	66.4	10.6	36	158.5	0.020	Afghanistan
Bangladesh	164.7	1,265	1.0	19	5	28	72.2	72.8	66.6	1.9	78.4	18.2	369	19,291.0	1.008	Bangladesh
Brunei	0.4	81	1.3	16	3	8	77.1	96.1	0.2	1.6	137.8	75.0	6	49.9	0.254	Brunei
Guyana	0.8	4	0.6	21	8	27	66.5	85.6	0.3	1.3	85.3	35.7	7	1.2	0.005	Guyana
Indonesia	264.0	146	1.1	19	7	22	69.0	95.4	127.1	1.4	153.1	25.4	196	5026.9	2.248	Indonesia
Malaysia	31.6	96	1.4	17	5	7	75.2	93.1	15.4	2.1	155.7	78.8	98	1,083.8	1.626	Malaysia
Maldives	0.4	1,454	2.0	19	3	7	77.1	98.6	0.2	2.2	228.8	59.1	54	459.5	0.051	Maldives
Pakistan	197.0	256	2.0	29	7	64	66.3	57.0	70.0	2.3	73.0	15.5	356	11,407.7	2.540	Pakistan
Suriname	0.6	4	0.9	18	7	18	71.3	92.9	0.2	1.2	162.0	45.4	31	271.5	0.018	Suriname
<b>Europe &amp; Central Asia-8</b>	<b>164.3</b>	<b>34</b>	<b>1.5</b>	<b>20</b>	<b>6</b>	<b>17</b>	<b>73.3</b>	<b>97.6</b>	<b>70.7</b>	<b>1.4</b>	<b>117.4</b>	<b>55.1</b>	<b>844</b>	<b>18,509.1</b>	<b>6.797</b>	<b>Europe &amp; Central Asia-8</b>
Albania	2.9	107	0.1	12	7	12	78.2	97.2	1.3	0.1	112.7	66.4	35	575.6	0.018	Albania
Azerbaijan	9.8	119	1.0	17	6	27	71.8	99.8	5.0	0.7	123.8	78.2	66	1,129.1	0.101	Azerbaijan
Kazakhstan	18.2	7	1.2	23	7	10	72.0	99.8	9.2	0.4	173.2	76.8	68	2020.7	0.107	Kazakhstan
Kyrgyz Republic	6.0	31	1.5	27	6	19	70.7	99.2	2.6	1.0	138.0	34.5	60	328.5	0.051	Kyrgyz Republic
Tajikistan	8.9	64	2.1	29	5	37	71.0	99.5	3.4	2.1	112.0	20.5	76	443.4	0.036	Tajikistan
Turkey	80.7	105	1.5	16	6	11	75.4	95.6	31.3	1.7	111.2	58.3	450	10,756.6	6.448	Turkey
Turkmenistan	5.8	12	1.7	26	7	43	67.6	..	2.6	1.5	169.9	18.0	19	1452.0	0.010	Turkmenistan
Uzbekistan	31.9	75	1.5	23	5	21	71.1	100.0	15.3	1.5	88.7	46.8	70	1,803.0	0.027	Uzbekistan
<b>IDB-57</b>	<b>1,802.2</b>	<b>57</b>	<b>1.9</b>	<b>27</b>	<b>7</b>	<b>37</b>	<b>67.0</b>	<b>70.5</b>	<b>680.8</b>	<b>2.1</b>	<b>105.4</b>	<b>31.0</b>	<b>6,606</b>	<b>126,562.0</b>	<b>100<sup>2</sup></b>	<b>IDB-57</b>

<sup>1</sup>Excludes data on Regional Projects, Special Programs and Non-Member Countries, since IDB commenced its operations in 1975 to 31 December 2017.

<sup>2</sup>Includes uncommitted 0.842%

